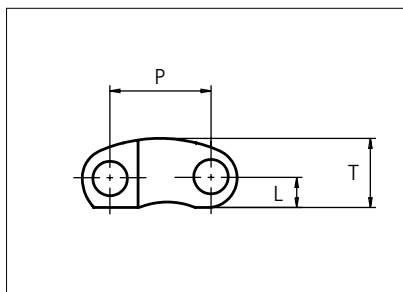
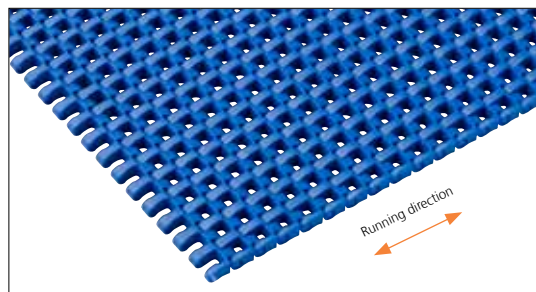


Plastic Modular Belt

Serie **uni M-TTB** Type **37% CS**



Straight Running
 Nominal pitch: 12.7 mm (0.50 in)
 Surface type: Curved
 Surface opening: 37%
 Backflex radius: 12.5 mm (0.49 in)
 Min flex diameter (nosebar): 19.1 mm (0.75 in)
 Pin diameter: \varnothing 4.0 mm (0.16 in)
 Curved surface makes perfect circle when 25.4 mm (1.00 in) flex diameter is applied.

Belt material & color	PP B		mm	in		mm	in
Pin material & colors	PP W	P (Nominal)	12.7	0.50	T	8.8	0.35
		L	3.8	0.15	-	-	-

Non standard material and color: See uni Material and Color Overview.

Alternative pin material: PA6.6 **B**

Belt width		Permissible tensile force (Belt/pin material)		Belt weight (Belt/pin material)		*Min No drive sprocket per haft	Number of wear strips (min no)	
		PP/PP		PP/PP			**Carry (pcs)	**Return (pcs)
mm	in	N	lbf	kg/m	lb/ft			
77	3.0	1001	225	0.3	0.22	2	2	2
154	6.1	2002	450	0.6	0.43	2	2	2
231	9.1	3002	675	1.0	0.65	3	2	2
308	12.1	4003	900	1.3	0.87	4	3	2
385	15.2	5003	1125	1.6	1.09	4	3	2
462	18.2	6004	1350	1.9	1.30	5	4	2
539	21.2	7004	1575	2.3	1.52	6	4	2
616	24.2	8005	1799	2.6	1.74	7	5	3
693	27.3	9005	2024	2.9	1.96	7	5	3
770	30.3	10006	2249	3.2	2.17	8	6	3
847	33.3	11006	2474	3.6	2.39	9	6	3
924	36.4	12007	2699	3.9	2.61	10	7	4
1001	39.4	13007	2924	4.2	2.82	11	7	4

Additional standard belt widths are available in steps of 77.0 mm (3.03 in.) Additional non-standard belt widths are available in steps of 12.7 mm (0.50 in.)

2002	78.8	26026	5851	8.4	5.65	21	14	7
------	------	-------	------	-----	------	----	----	---

Additional standard belt widths are available in steps of 77.0 mm (3.03 in.) Additional non-standard belt widths are available in steps of 12.7 mm (0.50 in.)

1925	75.8	25025	5626	8.1	5.43	20	13	7
------	------	-------	------	-----	------	----	----	---

General belt tolerance is +0/-0.4% at 23°C/73°F and 50% RH. For exact belt width contact Customer Service. Non standard belt width on request.

*Max. Load per Drive Sprocket. Belt material: PP 1000 N (225 lbf)

**Max. Spacing between wear strips. Carry: 152 mm (6 in); Return: 304 mm (12 in)

= Single Link

STANDARD

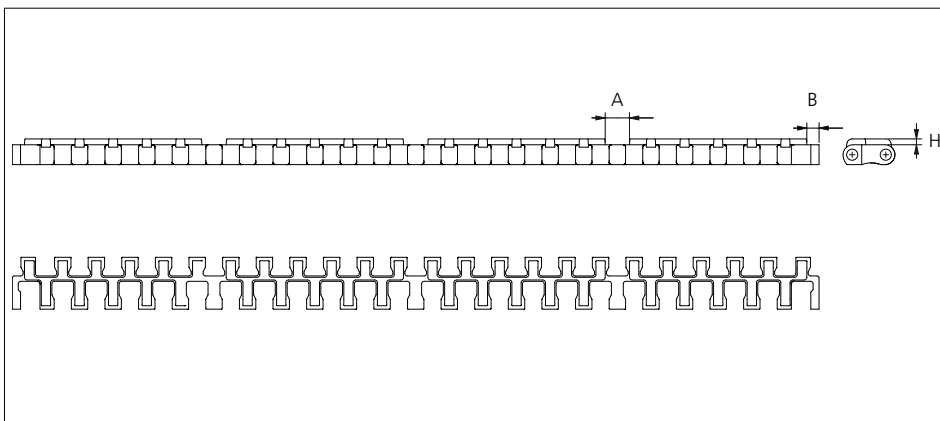
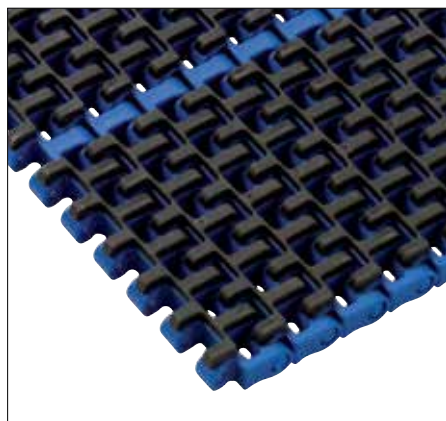
STRAIGHT RUNNING

PITCH 12.7 MM/0.50 IN

Any questions? Please contact us.

Accessories

Rubber Top

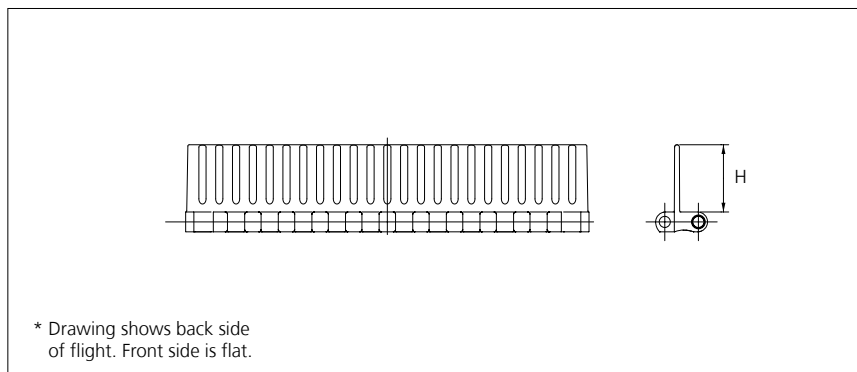
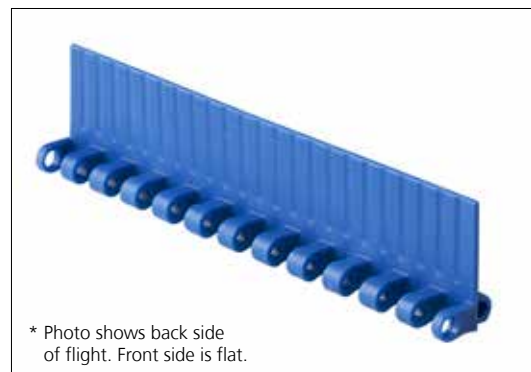


Type	Belt material & color	Rubber material & color	A		B		H		Link size	Width	
			mm	in	mm	in	mm	in		mm	in
Flat	PP W	03 W	9.2	0.36	4.6	0.18	2.2	0.09	K1200	308.0	12.1
	PP B	03 K									
	PP G	03 K									

Other Non Standard Rubber profiles: See uni Rubber Profile Overview.

Accessories

Flight



Type	Material & color	H		Link size	Width	
		mm	in		mm	in
Flat/Non Stick*	POM-D W B	25.4	1.00	K600	152.0	5.98

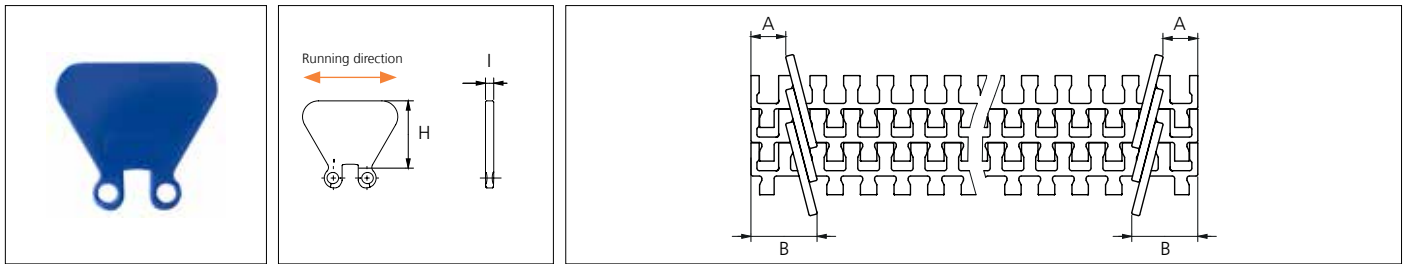
Non standard material and color: See uni Material and Color Overview.

Minimum indent is for uni M-TTB flight 0 mm. Increment: 25.4 mm (1.00 in).

Any questions? Please contact us.

Accessories

Side Guard



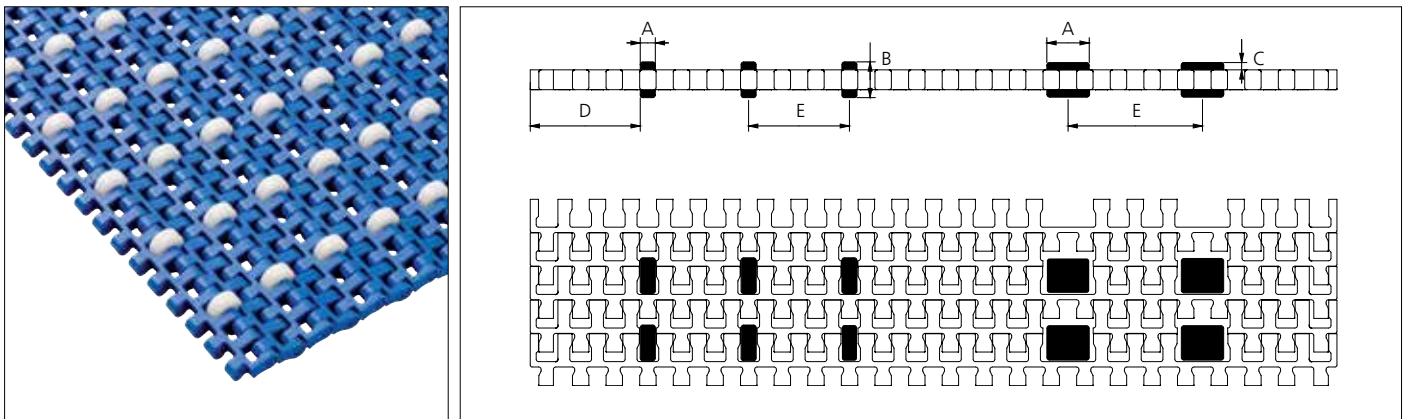
Type	Material & color	*A		B		H		I	
		mm	in	mm	in	mm	in	mm	in
Closed	POM-D W B	13.0	0.50	25.0	0.98	25.4	1.00	3.1	0.12

Non standard material and color: See uni Material and Color Overview.

*Minimum indent is for uni M-TTB Side Guard. Increment: 12.7 mm (0.50 in).

Accessories

Roller



Type	Roller material & color	A		B		C		D (min)		E (min)	
		mm	in	mm	in	mm	in	mm	in	mm	in
Plastic	POM-D W	5.7	0.22	13.0	0.51	2.75	0.11	22.0	0.87	25.4	1.00
		10.5	0.41	13.0	0.51	2.75	0.11	22.0	0.87	25.4	1.00
		16.0	0.62	13.0	0.51	2.75	0.11	22.0	0.87	38.1	1.50

Non standard Roller material and color: See uni Material and Color Overview.

Any questions? Please contact us.

Sprocket

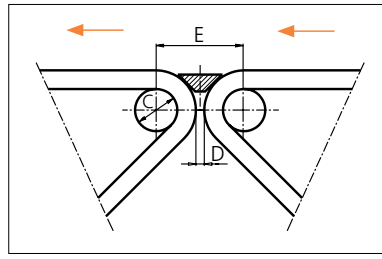
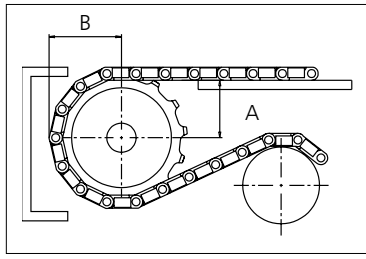
No of teeth	Bore size										Overall diameter		Pitch-diameter		Hub-diameter		A-dimension		B-dimension		Single row/Two way	Double row/Two way	Molded PA6 LG	Machined PA6 N
	Pilot bore	in	0.75	0.78	0.98	1.00	1.18	1.25	1.50	1.57														
	mm	19.1	20.0	25.0	25.4	30.0	31.8	38.1	40.0	mm	in	mm	in	mm	in	mm	in	mm	in					
Z12	x		●	●							52.0	2.05	49.1	1.93	40.7	1.60	20.0	0.79	28.2	1.11		x		x
Z15	x				●	●					64.6	2.54	61.1	2.41	53.3	2.10	26.1	1.03	34.2	1.35		x		x
Z19	x									■	80.1	3.15	77.2	3.04	68.8	2.71	34.3	1.35	42.3	1.66	x		x	
Z24	x			●	●	●	●	●	■	■	102.1	4.02	97.3	3.83	90.8	3.57	44.5	1.75	52.4	2.06		x		x
Z36	x								■	■	152.3	6.01	145.7	5.74	141.0	5.55	68.8	2.71	76.6	3.01		x		x

■ Molded sprocket ■ Machined sprocket ● Machined sprocket



Non standard material and color: See uni Material and Color Overview.

Nosebars Min. Dimensions



	mm	in
C	19.0	0.75
D	4.0	0.16
E	43.2	1.70

Other sprocket sizes are available upon request.
 Two-part sprocket are available upon request.
 Round bores are always delivered with keyway.
 Other bore sizes are available upon request.
 uni Retainer Rings: See uni Retainer Ring data sheet.
 Width of tooth = 6.5 mm (0.26 in)
 Width of sprocket = Single row: 17.5 mm (0.69 in)
 Double row: 30.0 mm (1.18 in)

Max load per sprocket shown does not take bore size into account.
 Please also ensure that sufficient size shaft is chosen for corresponding load.

For correct sprocket position: See uni Assembly Instructions for uni M-TTB.
 For more detailed sprocket information, contact Customer Service.

Any questions? Please contact us.

Morskate Aandrijvingen BV
 Oosterveldsingel 47A
 7558 PJ Hengelo (Ov)
 The Netherlands

NL
 T +31 (0)74 - 760 11 11
 info@morskateaandrijvingen.nl
 www.morskateaandrijvingen.nl

DE
 T +49 692 - 222 34 95
 info@morskateantriebstechnik.de
 www.morskateantriebstechnik.de

EN
 T +31 (0)74 - 760 11 11
 info@morskatedrivetechnology.com
 www.morskatedrivetechnology.com